

# **REACTION DISTRIBUTING INC.**

**19 BROCK STREET  
AJAX, ONTARIO, CANADA  
L1S 1S9**

**GARBAGE CHUTES  
INSTALLATION GUIDE**

## TRASH CHUTES INSTALLATION METHOD

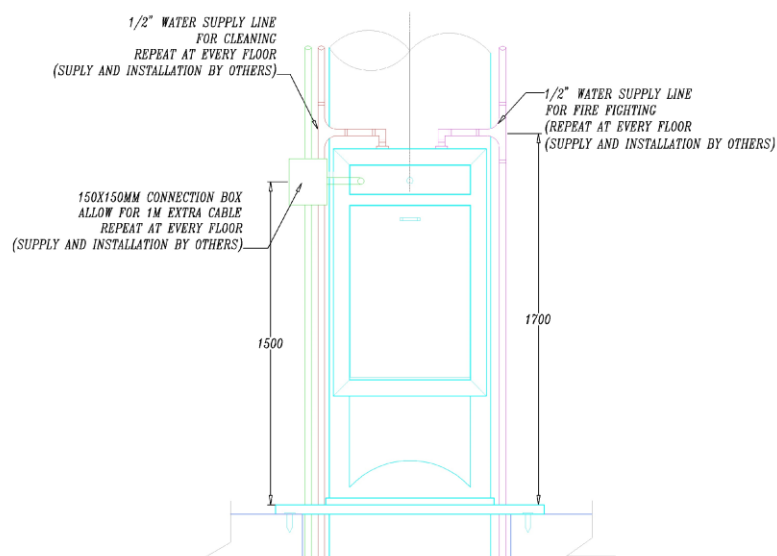
Installation of an RDI chute requires the following tools: drill, hammer, screwdriver, wrench and level.

Materials are prefabricated to dimensions shown on shop drawings, therefore, no field cutting or fitting is required. The joints are "slip joints" to permit slight field height variations.

Intake doors, frames and hardware are prefabricated and installed on each intake section throat, fully assembled. The protective covering on the doors should be removed only after completion of plastering and painting.

### **Preambles (By Main Contractor)**

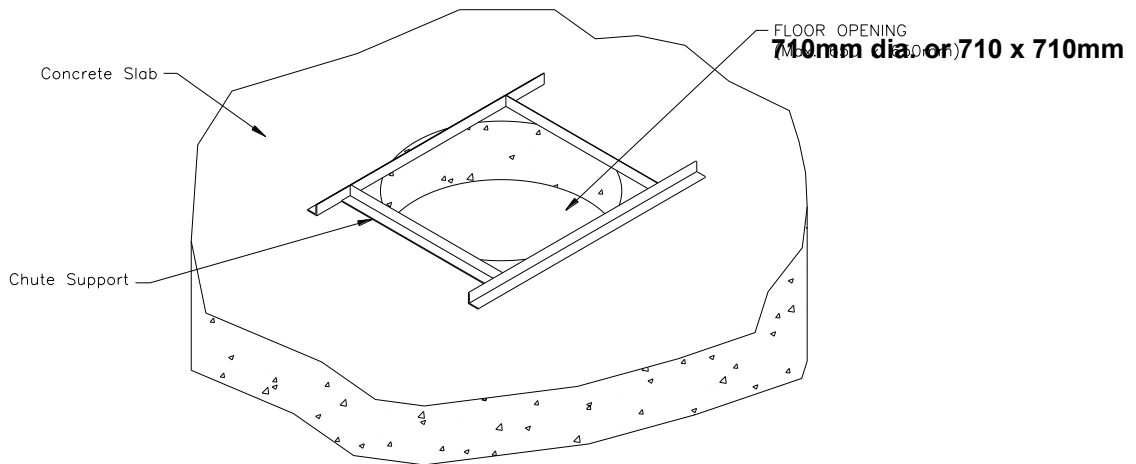
- 1- Make sure the shaft is safe from falling objects, properly ventilated, has a nearby source of electricity and has a fully open front for full access to the chute shaft.
- 2- Make sure shaft is clear from all debris and has a maximum  $\text{Ø}710\text{mm}$  diameter or  $710 \times 710\text{mm}$  opening on each slab the chute crosses.
- 3- Install and plumb Flushing pipes riser as per Supplier recommendations and branch out  $\frac{1}{2}$ " Tee connections at every floor at  $1600 \sim 1700\text{mm}$  from finished floor level.
- 4- Install and plumb Fire Fighting pipes/riser as per Supplier recommendations and branch out  $\frac{1}{2}$ " Tee connections at every floor at  $1600 \sim 1700\text{mm}$  from finished floor level.
- 5- Install Electrical conduits and junction boxes per Electrical Engineer's recommendations and branch out  $\frac{1}{2}$ " Tee connections at every floor at  $1500\text{mm}$  from finished floor level.



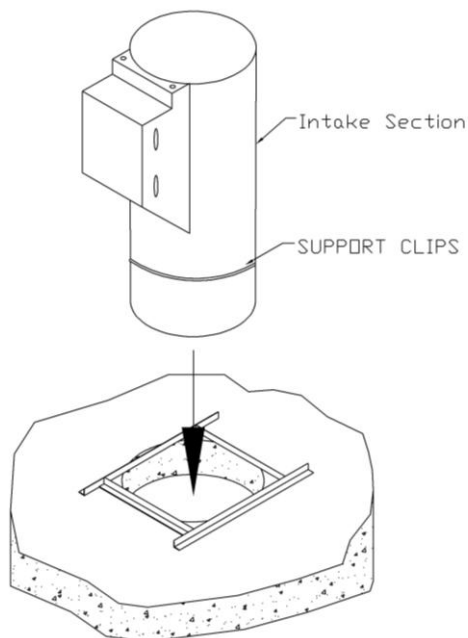
- 6- Distribute chute sections, typically one intake two plain sections and one floor support per floor.

## Installation

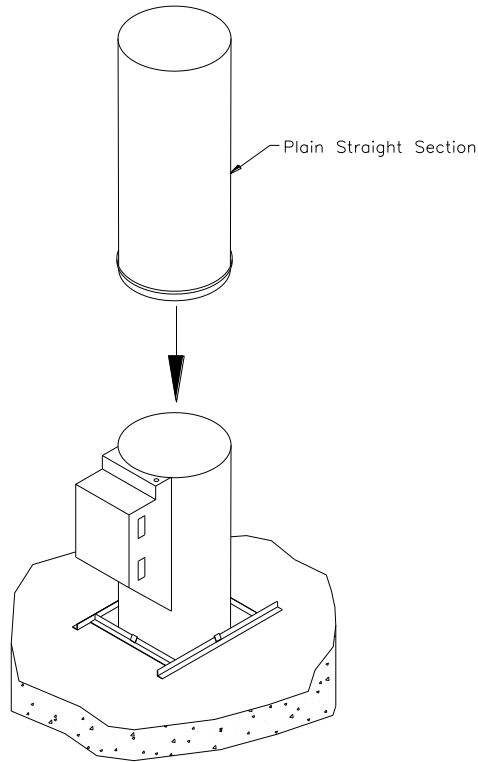
1. On the first floor above the discharge room, place a floor support angle over floor opening with cross members parallel to the intake door.



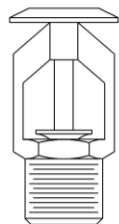
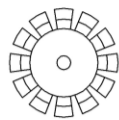
2. Set the first intake section into the floor opening and seat the supporting ring over the floor support.



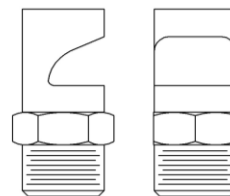
3. After first intake section has been set, slip the beaded end of the plain chute section into the intake section making sure it is sealed all around. Some floor heights may require multiple straight sections. Check with level to plumb chute as installation proceeds.



4. Repeat steps #1, #2 and #3 on the remaining floors. Note the floors requiring intakes with sprinkler heads. Per NFPA, this means the top floor and at alternate floor levels with a mandatory one at the first intake floor. Check with Local Authorities if fire sprinklers are required on every intake. Note the different types of sprinkler heads.

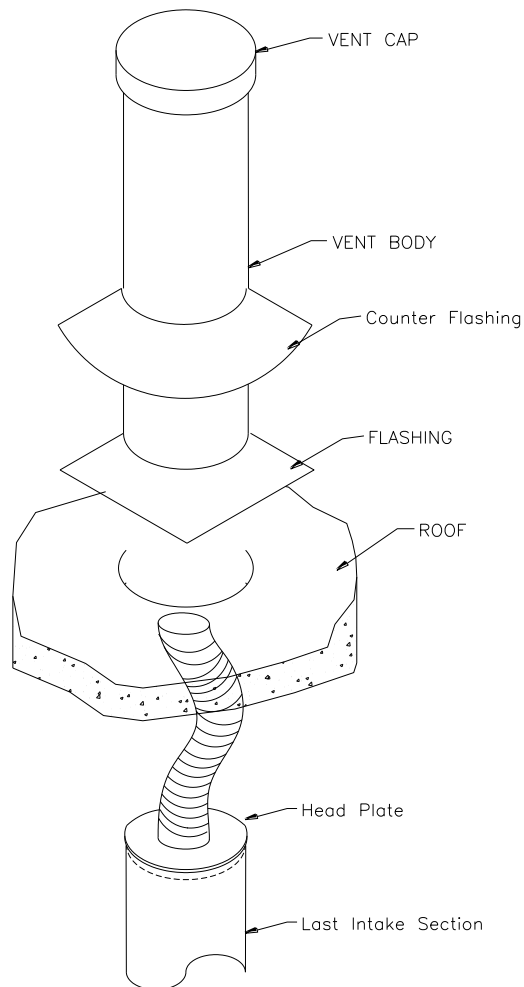


Fire Sprinkler Head  
rated at 68C.

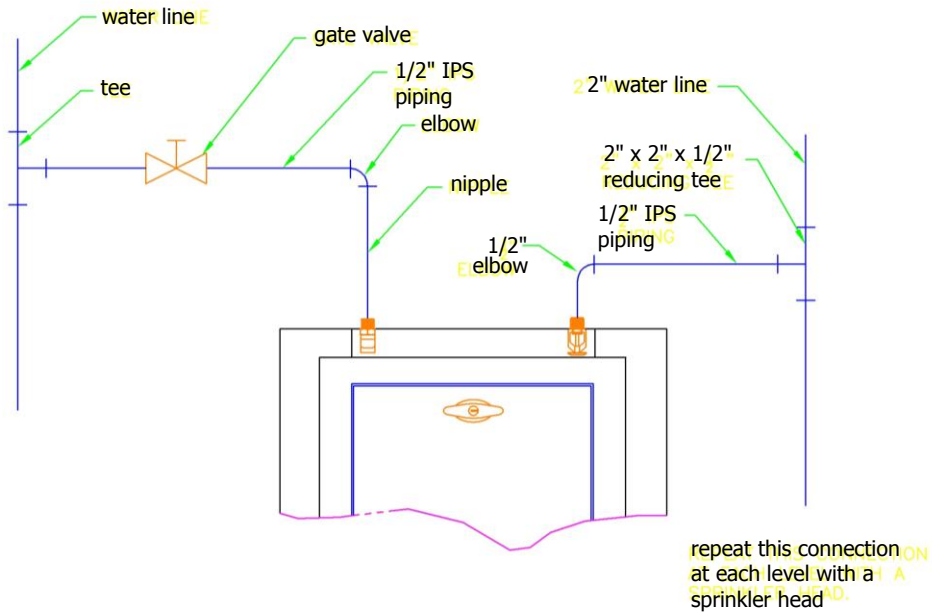


Flushing Sprinkler Head

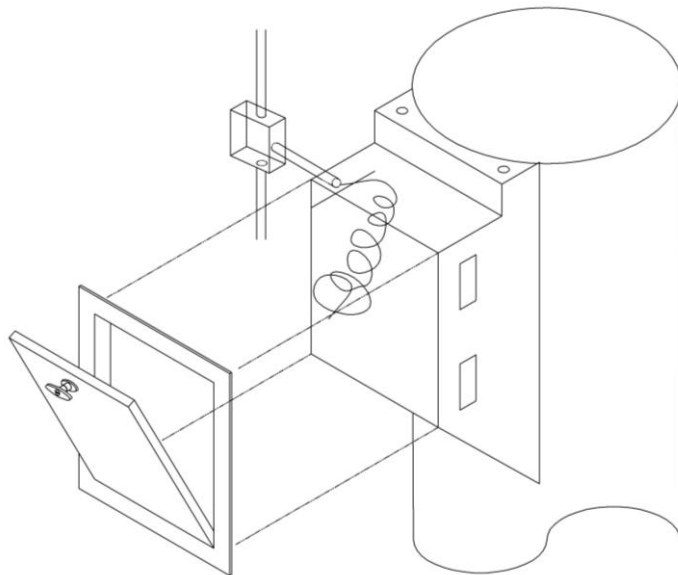
5. After installation of the top intake section and final straight sections, install the chute cleaning brush if required or else the chute head plate. Connect the flexible or semi rigid hose and extend it to connect to the chute vent section above the roof.



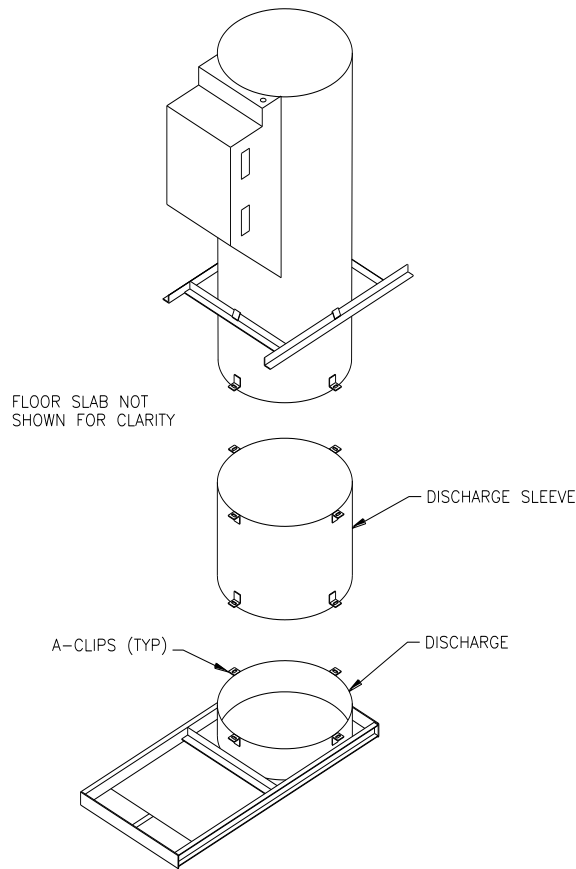
6. Place vent assembly over the section protruding through the roof, until the vent is seated onto the roof. Secure the vent body to the flexible hose. Attach counter flashing to the vent pipe. The roofer may then finish over the flashing assembly.
7. Once the complete chute is erected, use the extra sound dampening supplied to cover any compensation sections unpainted at the factory.
8. Now, the plumber, fire fighting, and electrical contractors can connect all cables and plumbing accessories to the respective provisional connections in the intake section. Then, the civil contractor erects the chute room walls after completion of all fire protection and other necessary trades taking particular note that electrical cables extend at least 1m into the intake section to allow connection to the electrical lock.



**PLUMBING HOOKUPS  
(BY OTHERS)**

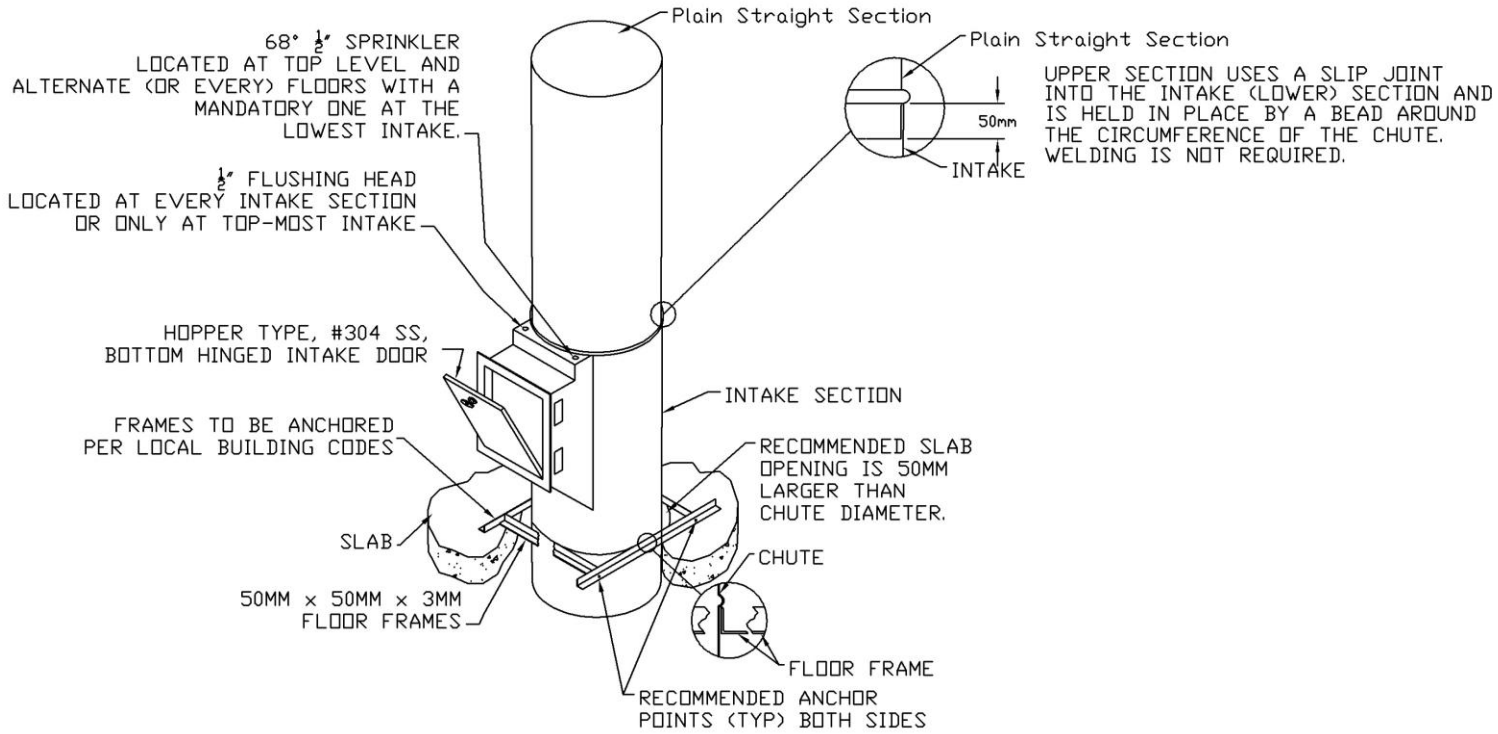


9. After all of chute walls have been erected, starting at the first intake floor, connect the electrical cables, plumb and level intake doors. Make sure that the face of the doors is flush to the erected wall finish.



10. Depending on the type of installation, complete installation in the discharge room. Slip the discharge sleeve, this sleeve has 4 angle clips on each end, over the section of chute projecting through the first floor slab. Match the clips and secure with long bolts and nuts. Secure the discharge in the same manner to the sleeve.
11. Slide the door back and connect the fusible link to the angle clip on the bottom of the door.
12. Note: The GC **MUST** leave the front of the chute shaft open to facilitate the installation of the chute. All wall materials (block, steel studs etc.) **MUST** be installed **AFTER** the chute has been completely installed. Failure to comply **WILL** result in additional installation costs and **WILL** necessitate the customization of door sleeves; which will be an additional costs over and above the standard chute material and/or installation costs.

## Standard Floor Elevation



**REACTION DISTRIBUTING INC.**

19 BROCK STREET, AJAX, ONTARIO, CANADA, L1S 1S9

TEL: (905) 426-6442 \* FAX: (905) 426-5925